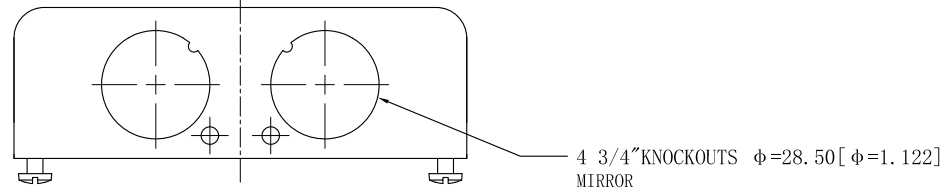
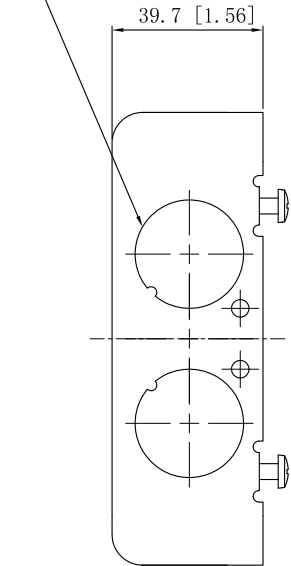


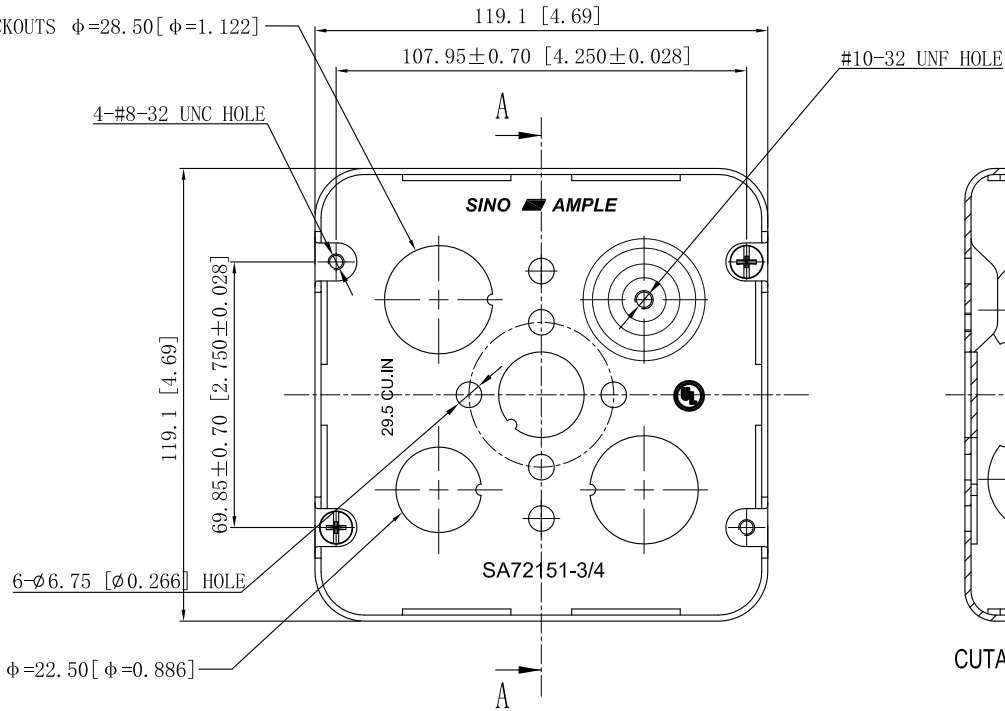
| | |
|---------------------------------------|------------------|
| SIDES | BOTTOM |
| 8 3/4" KNOCKOUTS | 2 1/2" KNOCKOUTS |
| | 2 3/4" KNOCKOUTS |
| | 1 Ground Hump |
| 2 PCS 8-32X1/2 Screws Installed | |
| Material:Steel-0.0625"-G60 Galvanized | |



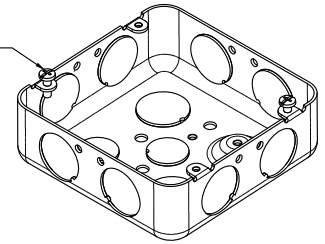
4 3/4" KNOCKOUTS $\phi=28.50$ [$\phi=1.122$]
MIRROR



2 3/4" KNOCKOUTS $\phi=28.50$ [$\phi=1.122$]



#8-32, X2



CUTAWAY VIEW A-A

2 1/2" KNOCKOUTS $\phi=22.50$ [$\phi=0.886$]

This data sheet is for reference only. SINO AMPLE reserves the right to make changes to the design without prior notice.

| |
|-----------------------|
| DESCRIPTION |
| |
| TRADE REFERENCE TERMS |
| |

| |
|------------------|
| STANDARD PACKING |
| 25 PCS |

| | | |
|--|------------------------|----------|
| ZHUJI SINO AMPLE METAL PRODUCTS CO., LTD. | | |
| TITLE 4-11/16" SQUARE BOXS & EXTENSION RINGS (1-1/2") | | |
| SIZE A4 | DWG NO. SA72151-3/4 | REV A |
| DATA SHEET | | |