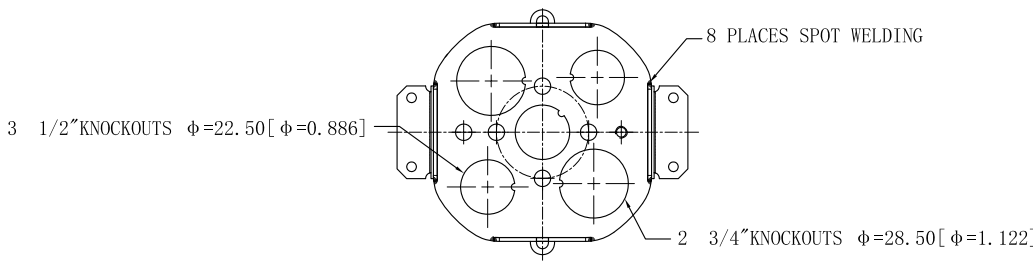
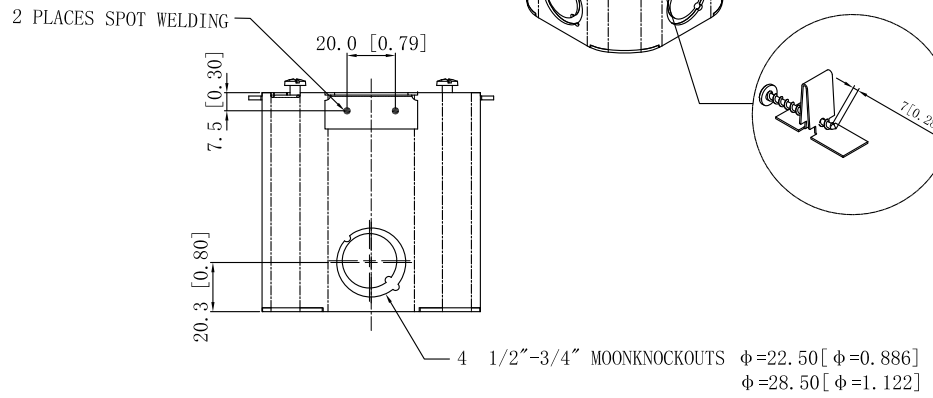
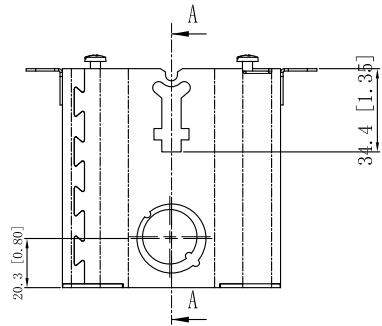
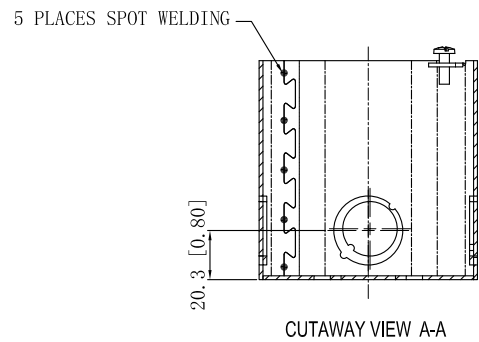
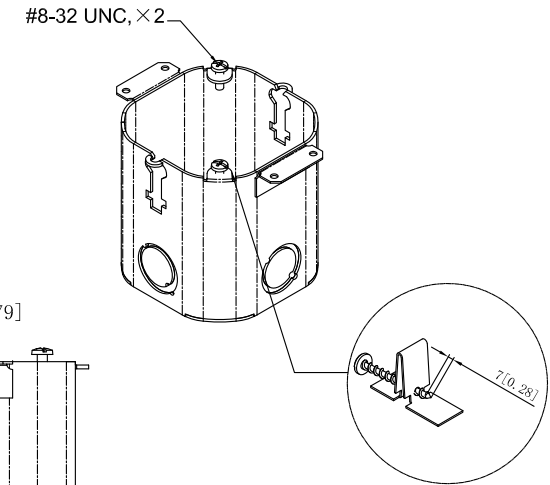
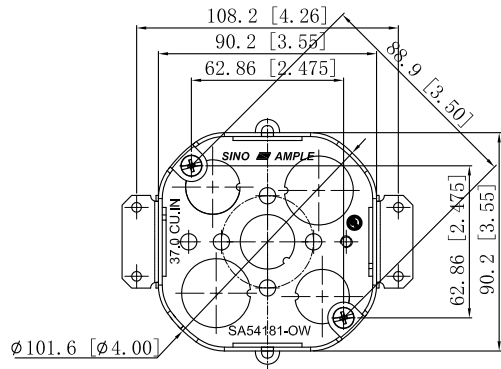


| SIDES                                      | BOTTOM           |
|--|------------------|
| 4 1/2"-3/4" MOON KNOCKOUTS                 | 3 1/2" KNOCKOUTS |
|  | 2 3/4" KNOCKOUTS |
| 2 PCS #6-20×1-3/4 Type AB Screws Installed |                  |
| 2 PCS 8-32×1/2 Screws Installed            |                  |
| Material:Steel-0.0625"-G60 Galvanized      |                  |



This data sheet is for reference only . SINO AMPLE reserves the right to make changes to the design without prior notice.

|                       |
|-----------------------|
| TRADE REFERENCE TERMS |
|                       |

|                  |   |            |     |
|------------------|---|------------|-----|
| STANDARD PACKING | ZHUJI SINO AMPLE METAL PRODUCTS CO. , LTD.  |            |     |
|                  | TITLE<br>3-1/2" DEEP WITH CONDUIT KNOCKOUTS |            |     |
| 10 PCS           | SIZE  | DWG NO.    | REV |
|                  | A4  | SA54181-OW | A   |
| DATA SHEET       |   |            |     |