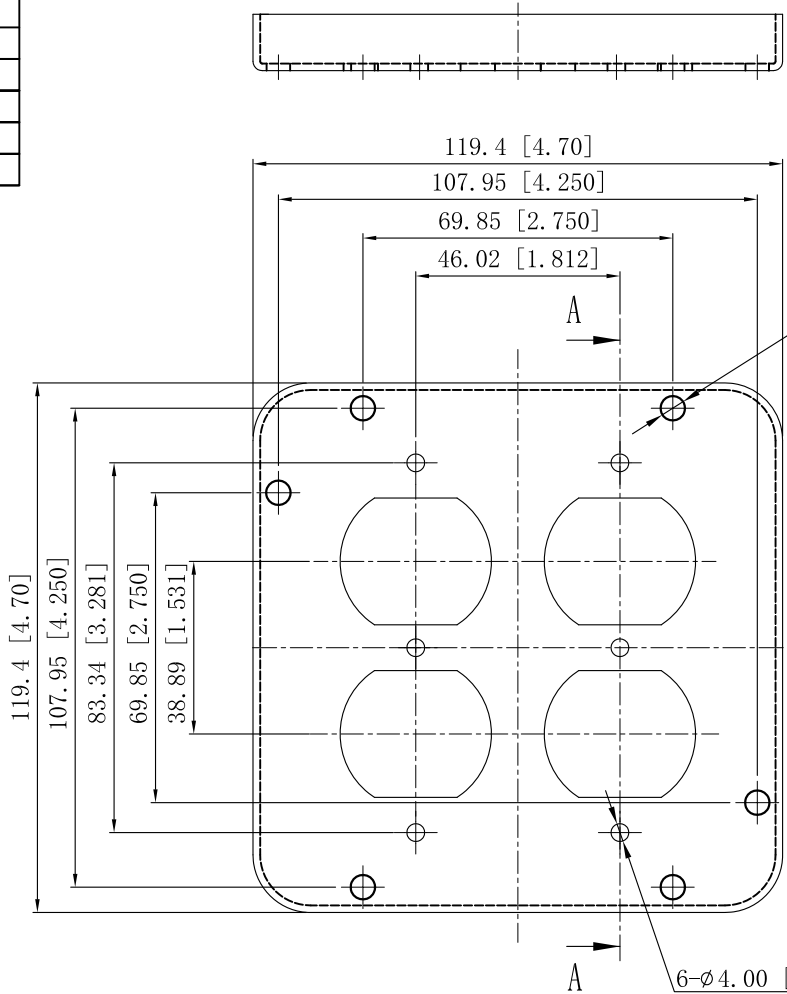
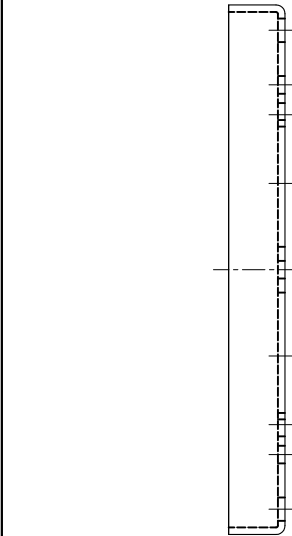


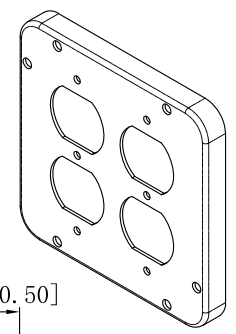
SIDES	BOTTOM
6 PCS 6-32×5/16 Screws Pack In Poly-bag Sepwrtely	
4 PCS 8-32×1 Screws Pack In Poly-bag Sepwrtely	
4 PCS 6-32 Nut Pack In Poly-bag Sepwrtely	
Material:Steel-0.0625"-G60 Galvanized	



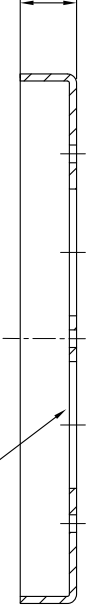
6-ø5.50 [ø0.217] HOLE

SA72C39, SINO AMPLE, 7.0 CU.IN. stick back side

6-ø4.00 [ø0.157] HOLE



12.7 [0.50]



CUTAWAY VIEW A-A

This data sheet is for reference only .SINO AMPLE reserves the right to make changes to the design without prior notice.

DESCRIPTION
TRADE REFERENCE TERMS

STANDARD PACKING
25 PCS

ZHUJI SINO AMPLE METAL PRODUCTS CO., LTD.		
TITLE 4-11/16" INDUSTRIAL "GARVIN" COVERS		
SIZE A4	DWG NO. SA72C39	REV A
DATA SHEET		